

NEVER FAR FROM ME

based on the recording of Gracious Father

Words by Matthew Carpenter.

Music and Arranged. by Joel Arcieri and Matthew Carpenter.

Arranged & Orchestrated by Keith McMinn

♩ = 67

G D Em $\frac{G}{B}$ C D G_{1.} D

VERSE

5 G_{2.} G D Em7 C

1.Fa-ther, late - ly my joy slips a - way, like hold-ing wa - ter in my
2.Fa-ther, don't you hear my cons - tant pleas and see my trou-ble close be-

9 D Em7 $\frac{G}{B}$ C Am D

hands. I _____ find no plea-sure in the day and dark-ness is my on - ly
hind? Though there's noth - ing that You can - not see, my un - belief says You are

13 G C D G $\frac{D}{F\#}$

friend. I con - fess I've lost my way from fields of joy to dens of
blind. Long and e - vil are the days and when they end I can - not

17 Em7 C D C D

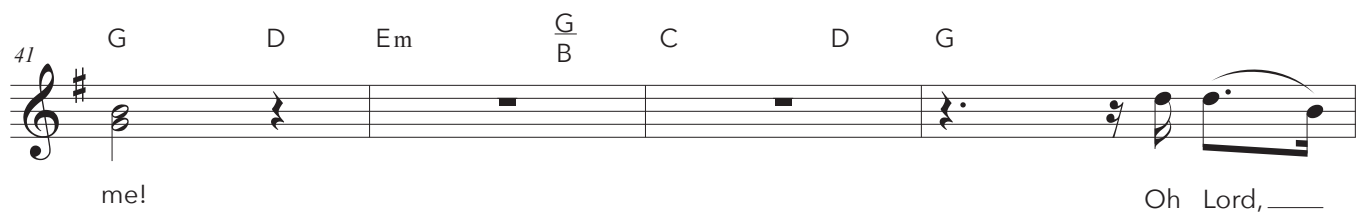
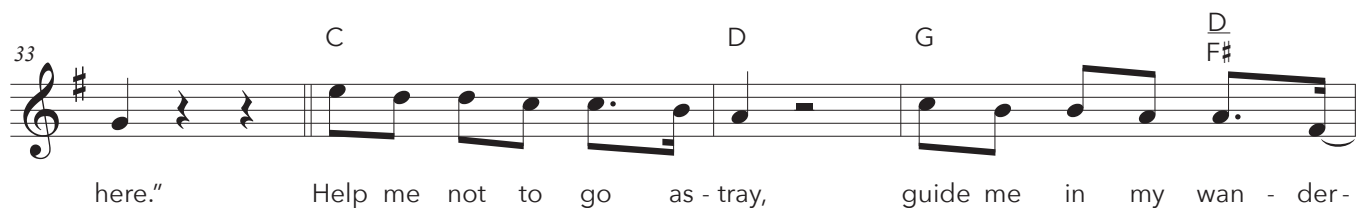
— grief. I'm on my knees as I now — pray: "Oh Lord please don't be far from
— see. Oh God please hear me as I — pray: "Oh Lord please don't be far from

21 G D Em $\frac{G}{B}$ C D G_{1.}

me!"
me!"

2.Fa-ther,


VERSE



VERSE



53 Em7 $\frac{G}{B}$ C Am D G



come to heal re-store and mend, then all will be as it should be.

57 C D G $\frac{D}{F\#}$ Em7



Ev-ry grief will fade a-way as I a-p-proach e-ter-ni-ty. And

61 C $\frac{D}{1.}$ C D G



when I see my Sa-vior's face, I'll know you were ne-ver far from me.

65 $\frac{D}{2.}$ $\frac{G}{B}$ C D Em D C D

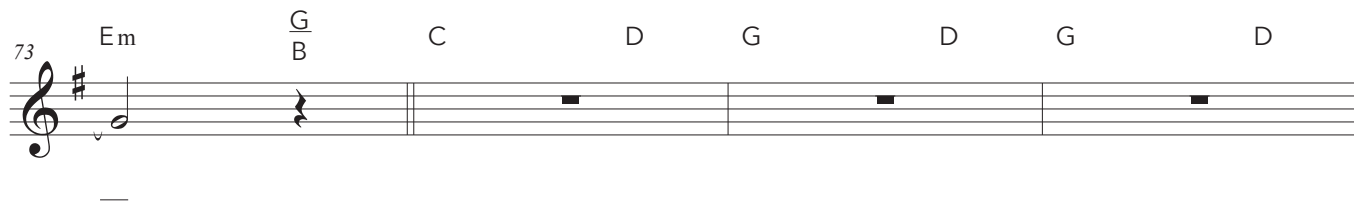
face, What once was dim I'll clear-ly see, through all my tears and suff-er-

69 Em C D G D



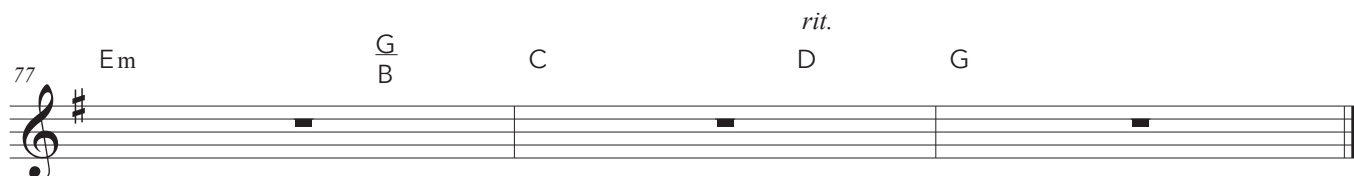
ing; that You were nev-er far from me.

73 Em $\frac{G}{B}$ C D G D G D



—

77 Em $\frac{G}{B}$ C *rit.* D G



—